

OBITUARY - ANNE FINNIGAN 1929 - 2009

We are very sad to record the death of Hampshire Mills Group member, **Anne Finnigan**, who died in May.

Anne and her husband Geoffrey, bought Pilcot Mill and the mill house in 1989. They became well known in the group, occasionally hosting meetings in the earlier years of HMG, so many will remember the lovely garden and idyllic setting of the mill, as well as Anne's infectious personality. Sadly, Geoffrey died in April 2003 having survived many years as one of the pioneer heart transplant patients at Harefield Hospital. Children, Peter and Julia, along with numerous grandchildren and other relatives, friends and villagers, remembered with great pleasure Anne's idiosyncratic habits and the delight she took in her mill ownership, at the funeral service held on Friday, 15th May at All Saints Church, Dogmersfield. HMG members, Tony Yoward, Sheila Viner, Ros and David Plunkett attended the service. Donations were collected for the Royal Brampton & Harefield Charitable Fund; should you wish to contribute please send to: Royal Brampton & Harefield Charitable Fund, c/o Goddard Limited, Kent Road, Fleet, Hampshire. GU13 9AH.

Tony and Mary Yoward probably knew Anne better than most as they were good friends and frequent visitors to Pilcot Mill. More recently, Ros and David visited Anne on many occasions, sharing Anne's passion for plants as well as Pilcot Mill.

The future of Pilcot mill is currently undecided. It is understood that the family would love to keep the mill where they too have many happy memories but there are issues that need to be resolved before a final decision can be made. We all hope that Anne's family will remain in contact with HMG and we send them, not only our condolences, but also our assurance that Anne will not be forgotten.

PILCOT MILL

O.S. MAP REFERENCE 186 SU 786 528 MILL REF H.WT. L17 (57)

The mill is situated down a lane to the SW of Pilcot Bridge Tributary of the River Hart.

Mill stands down lane south side of village. 2.5 f E of Church Large wheel in situ. (*Simmons*)

The mill mentioned under the Domesday Survey may very possibly have stood on the property later known as Pilcot for a water mill is known to have existed there in the C15th, C16th & C17th. (*VCH.4*) Ceased working circa 1928, before which it had been used as a bean mill,

Said to stand on site of a Roman mill. C.A.

1759 "Pilcot Mill" on map of 1759 (S)

1788 To be sold by auction at the George Inn, Odiham on 5 Feb. A freehold Water Corn Mill situated in the parish of Dogmersfield, Hants called Pilcot Mill, with the dwelling house, yard, garden, stable etc., now in the occupation of Peter BAZELY, Miller. (*Reading Mercury 21 Jan 1788*) (S)

1800 named "Green Mill" on Arrowsmith's map. (S)

1816 "Mill" at Pilcot on OS map (S)

1825 "Pilcot Mill" marked on Greenwood's map (*dir*). (S)

1875 Frederick EGGAR, miller, Pilcot Mill. (*dir*). (S)

1878 John T A HOWKINS, miller, Dogmersfield (*dir*). (S)

1880-85 C SHIRWELL, miller, Pilcot Mill (*dir*). (S)

1895-99 George WRIGHT jnr., miller, (*dir*). (S)

1932 marked "Pilcot Mill disused" on 25" O.S. map 1939

1966 Painting of Pilcot Mill by local artist Brigadier J P Duke on display at Fleet Arts Society exhibition. Six paintings of Pilcot Mill by other artists also on display. (*newspaper cutting 1966*)

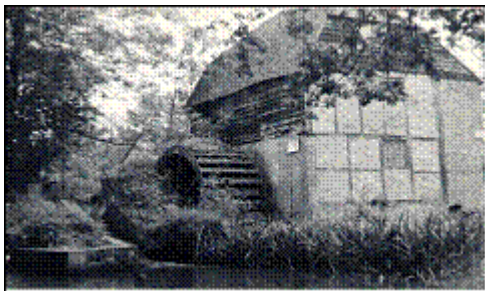
1968 Small two storey mill, timber framed with brick infilling, weatherboard upper, tiled roof. Waterwheel outside the building is still in place. No access. (*Gazetteer Water, Wind & Tide Mills Hants..-C Mellis*)

1978 This small three storey mill is separate from the mill house. It is timber framed with brick infill and the upper storey is weather boarded. The tiled roof is half hipped. External iron Poncelet waterwheel still in place but is deteriorating. Outside the mill at one end is the base of an engine. The stream which powered the wheel floods easily and has two by-pass channels adjacent to the wheel pit. The pit wheel and all the machinery are still in the mill, including two pairs of stones, one of which is a French Burr. The pulleys for an internal hoist as well as the grain bins and chutes are intact. The mill is a listed building. The timber framed mill house is also listed. (*Water & Windmills in Hants & IOW...C M Ellis...SUIAG*)

1980 Mill owned by Miss A CLUTTON. Mill Wheel, iron with buckets.

1989 Restoration of mill well underway. Mill owned by Anne & Geoff FINNIGAN (J.S)

5/1990 revised 7/1991 4/2003 5/2009 TY Abridged 5/2009 SMV for HMG Newsletter



Pilcot Mill, HMG Arthur Lowe Collection





Photos by Sheila Viner